

FLEXCUBE General Ledger Application Deployment in  
Weblogic  
Oracle FLEXCUBE Universal Banking  
Release 12.1.0.0.0  
[October] [2015]



---

# Table of Contents

- 1. GENERAL LEDGER APPLICATION FULL DEPLOYMENT ..... 1-1**
  - 1.1 INTRODUCTION ..... 1-1
  - 1.2 FULLY DEPLOYING FGL APPLICATION ..... 1-1
- 2. FLEXCUBE GENERAL LEDGER APPLICATION PARTIAL DEPLOYMENT ..... 2-1**
  - 2.1 INTRODUCTION ..... 2-1
    - 2.1.1 *Partially Deploying FGL Application*..... 2-1

---

# 1. General Ledger Application Full Deployment

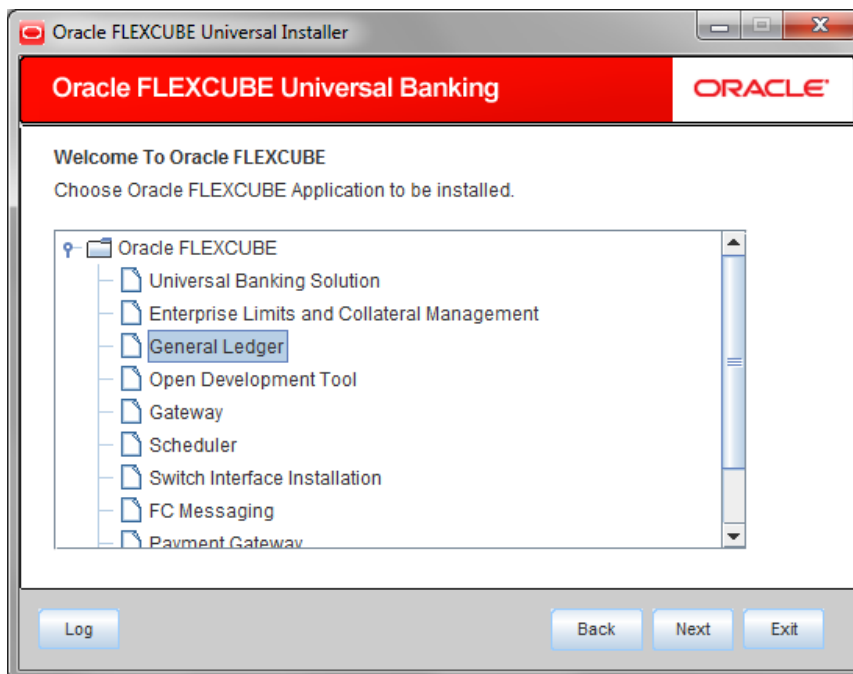
## 1.1 Introduction

This chapter explains the steps to install FLEXCUBE GENERAL LEDGER (FGL) application.

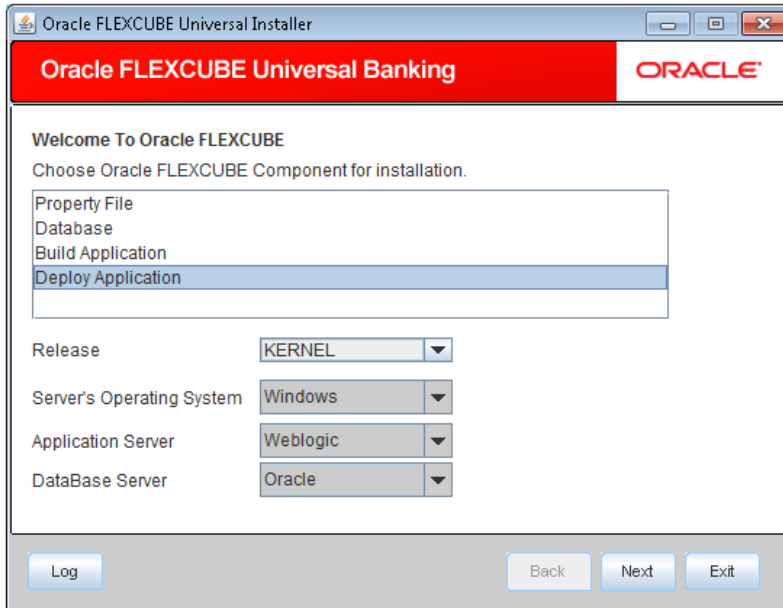
## 1.2 Fully Deploying FGL Application

To fully deploy the FGL application for Oracle FLEXCUBE Investor Servicing, follow the steps given below:

1. Launch Oracle FLEXCUBE Universal Banking Solution Installer.
2. Click 'Next'. Following screen is displayed:



3. Select 'General Ledger'. Click 'Next' to display the screen below.



4. Select 'Deploy Application'.
5. Specify the following details:

#### **Release**

Select the release in which you are installing the FGL application. Select the appropriate one from the adjoining drop-down list.

#### **Server's Operating System**

Select the server's operating system in which you are installing the FGL application. Select the appropriate one from the adjoining drop-down list.

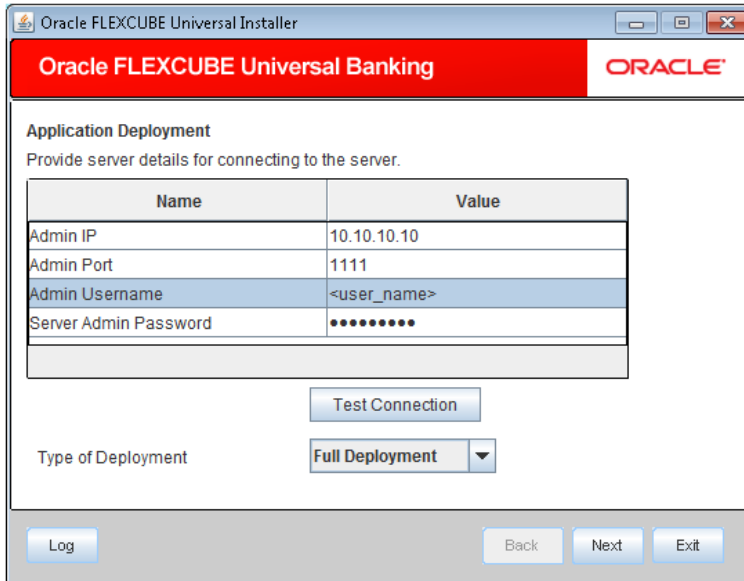
#### **Application Server**

Select 'Weblogic' from the adjoining drop down list.

#### **Database Server**

Select the database server in which you are installing the FGL application. Select the appropriate one from the drop-down list.

6. Once you have specified all the details , click 'Next'. Following screen is displayed



7. Specify the following details:

**Admin IP**

By default it will display local host and user can not edit it.

**Admin Port**

Specify the port number of the weblogic server..

**Admin UserName**

Specify the appropriate admin user name of the weblogic application server.

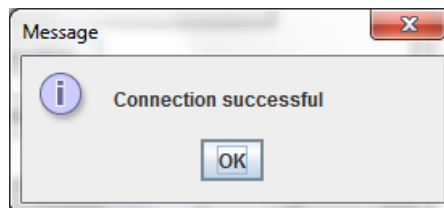
**Admin Password**

Specify the appropriate admin password of the weblogic application server.

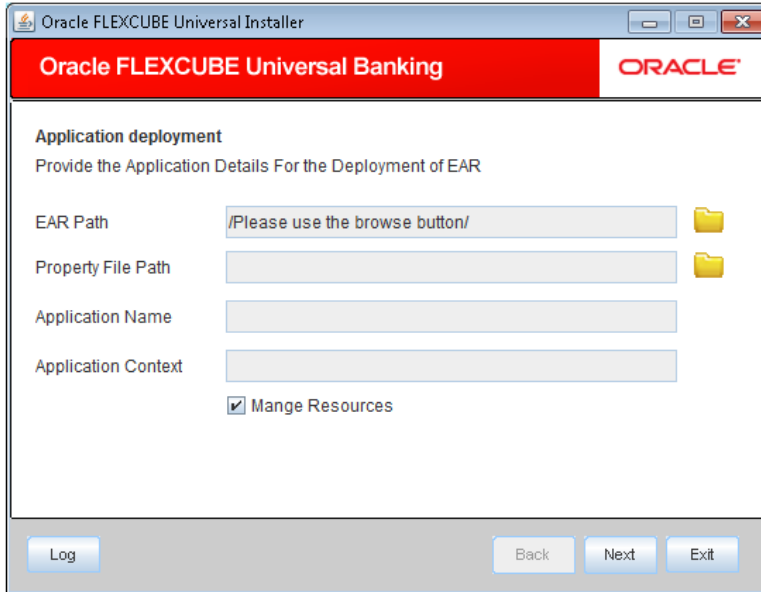
**Type of Deployment**

Select 'Full Deployment'.

8. Click 'Test Connection' to test the connection with the application server. On successful connection, the following screen is displayed.




9. Click 'OK' and following screen is displayed:.



10. Specify the following details:

### **EAR Path**

Select the application EAR to be deployed using the browse button.

 The Application EAR path cannot be copied and pasted on to the text box, thereby demanding the use of the browse button to select the EAR.

### **Property File Path**

If the property file is internal to the application EAR, it gets displayed here on selection of EAR path. If the property file is external, specify the location. You can use the directory button to browser and select the directory.

### **Application Name**

Application name gets displayed on selection of EAR path.

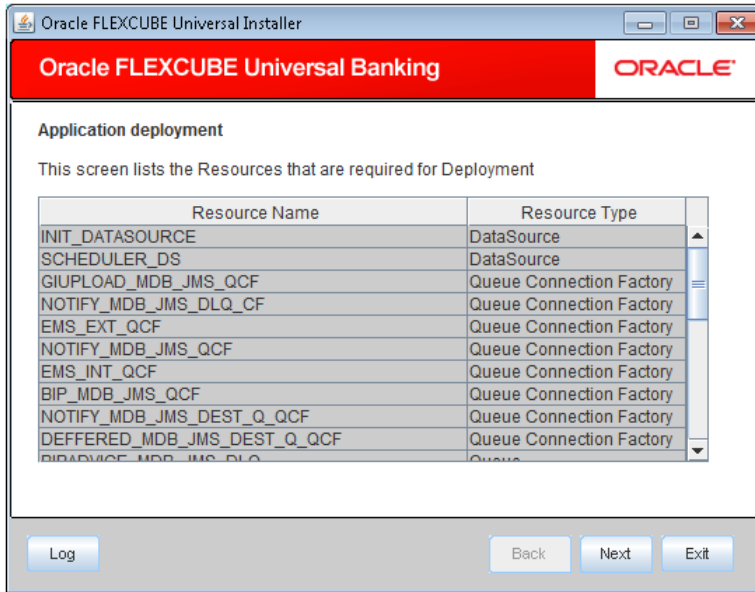
### **Application Context**

Application context gets displayed on selection of EAR path

### **Manage Resources**

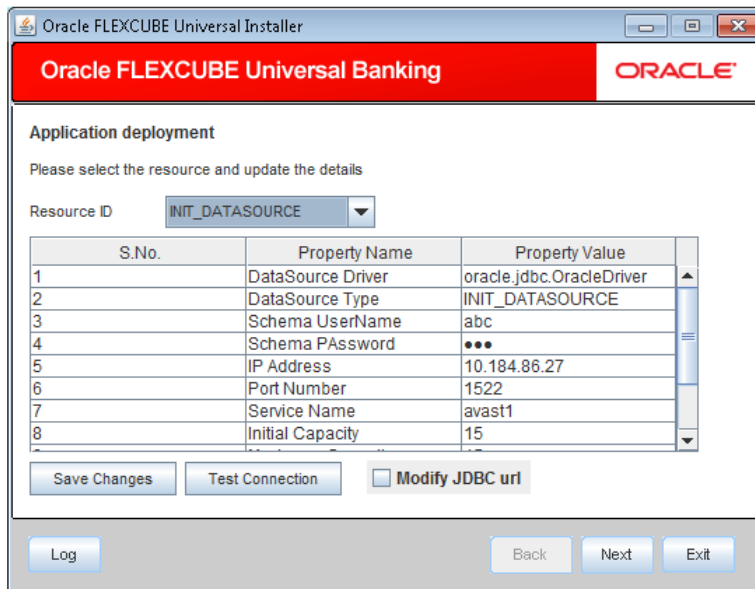
Check this box if resources are to be created along with deployment.

11. Click 'Next' and the following screen is displayed:



The following screen displays list and type of created resources.

12. Click 'Next' and the following screen is displayed:



13. Specify the following details:

**Resource ID:**

Select the date source needs to get created from the adjoining drop down list.

**DataSource Driver**

Displays JDBC driver url with which the connection is established.

**DataSource Type**

Displays the type of datasource that is to be created, XA or Non-XA.

**Schema Username**

Displays the username of the schema to which the connection is established.

**Schema Paasword**

Displays the password of the schema.

**IP Address:**

Displays the host address of the schema..

**Port Number:**

Displays the the port number of schema.

**Service Name**

Displays the schema name.

**Initial Capacity**

Displays the number of physical connections to be created, whilecreating the connection pool in the data source.

**Maximum Capacity**

Displays the maximum number of physical connections connection pool can contain.

**Capacity Increment**

Displays the increment by which this JDBC connection pool's capacity is expanded.

**Shrink Frequency**

Displays the number of seconds to wait before shrinking a connection pool that is incrementally increased to meet demand.

**Connection Reserve Timeout**

Displays the number of seconds after which a call to reserve a connection from the connection pool will timeout.

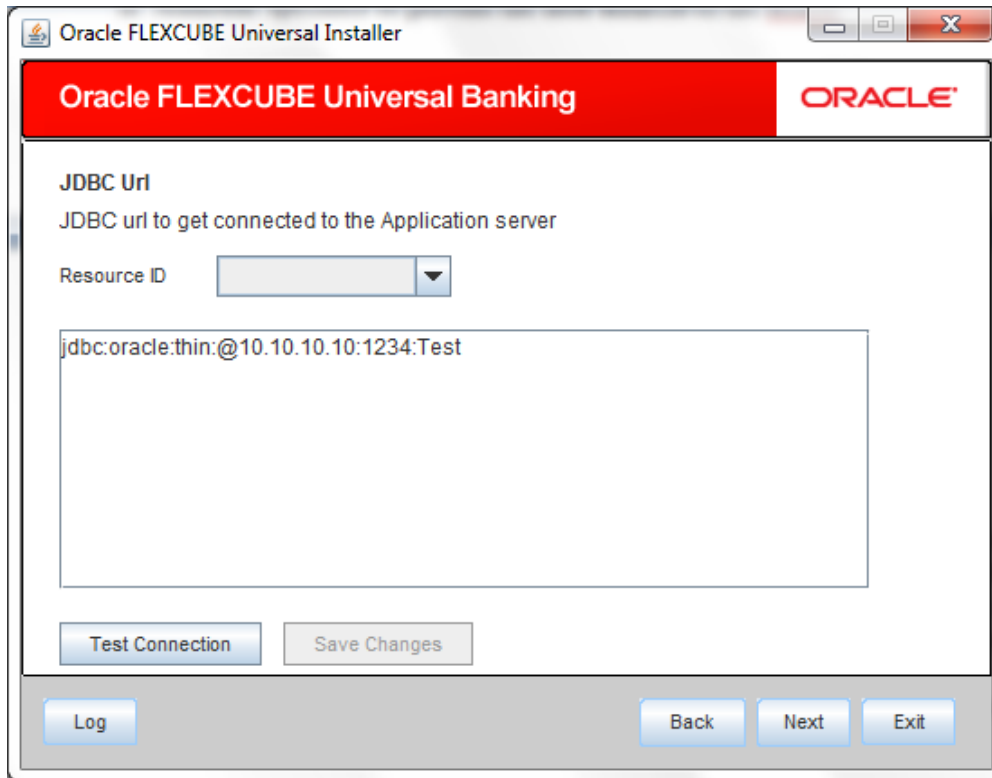
14. Click 'Save Changes' to save the values provided In the table against corresponding value of resource ID.

15. Click 'Test Connection' to establish connection with required details provided in the table.

**Modify JDBC URL**

Check this box to modify the JDBC URL.Click 'Next' and following screen is displayed:





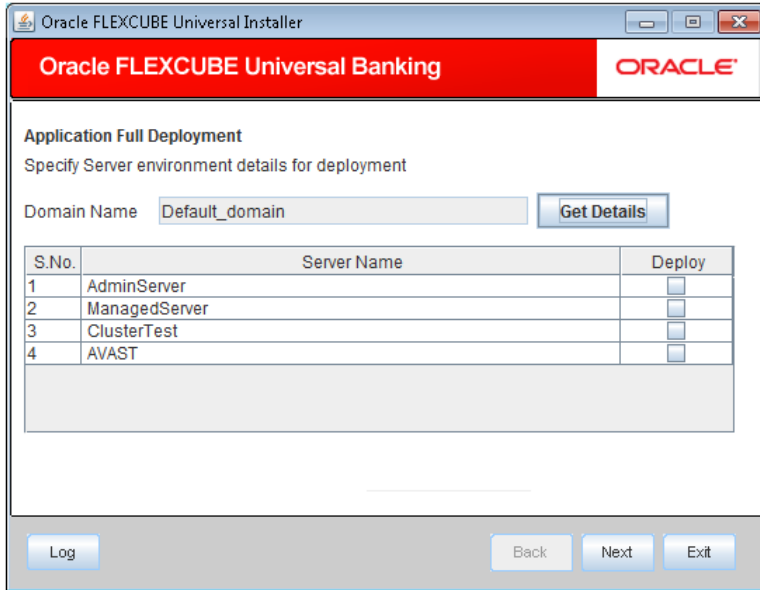
## Resource ID

It provides the list of all the datasources created. Select the data source for which the JDBC url needs to be modified from the adjoining option list.



The URL generated from the previous screen gets displayed here. If the user wants to change the URL, it can be changed in the present screen.

16. Click 'Test Connection' to check the connection using the changed URL. If the changed URL is correct the connection will be successful.
17. Click 'Save Changes' to save the changed JDBC URL
18. Click 'Next' and the following screen is displayed:



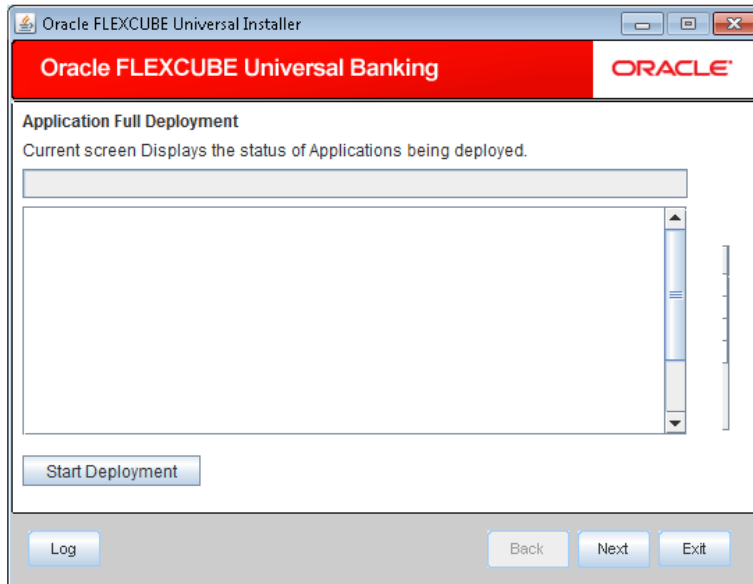
**Domain Name**

Displays the weblogic domains name.

19. Click 'Get Details' and the list of available servers are displayed:.

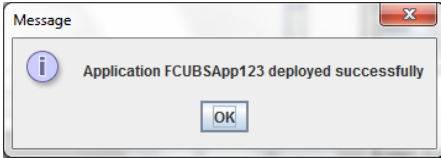
20. Check one of the server's name.

21. Click 'Next' and following screen is displayed:

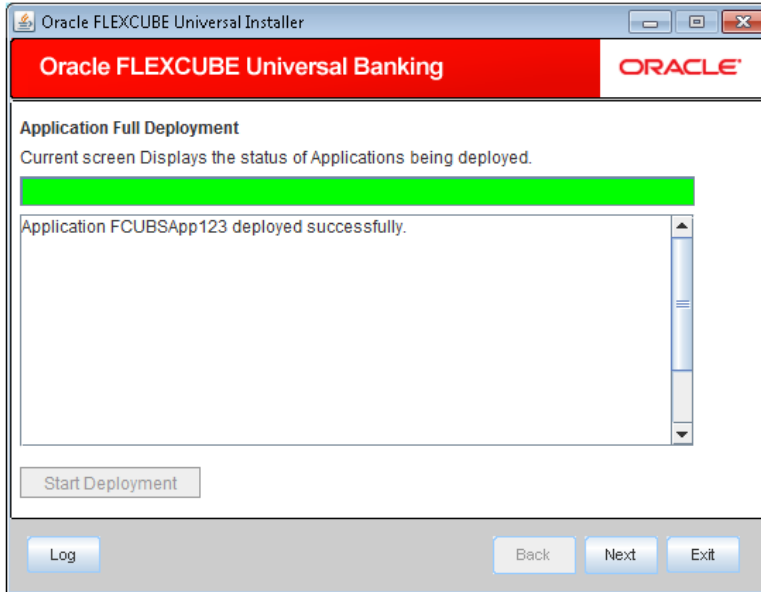


22. Click 'Start Deployment' to begin the process of application deployment.

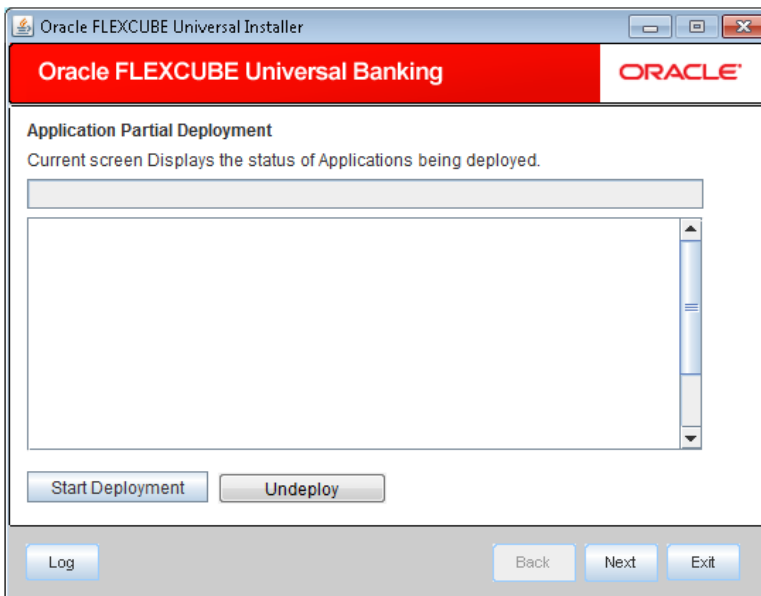
On successful deployment, the following screen is displayed:



Click 'OK' and the following screen is displayed:



23. If the deployment is not successful, the 'Undeploy' button gets enabled.



24. Click 'Undeploy' to undeploy the partially deployed EAR from the server.

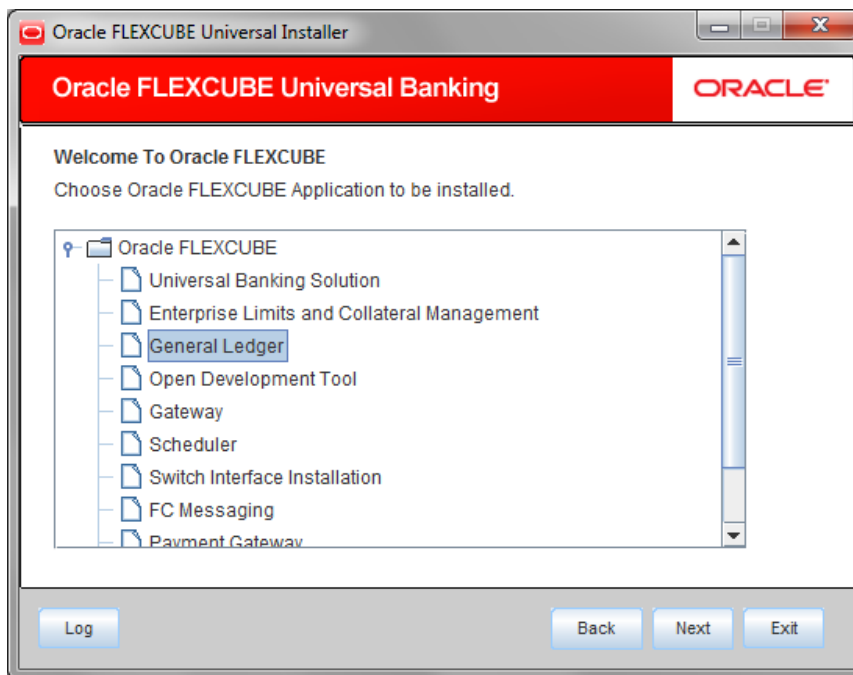
## 2. FLEXCUBE General Ledger Application Partial Deployment

### 2.1 Introduction

This chapter explains the steps to install FGL application.

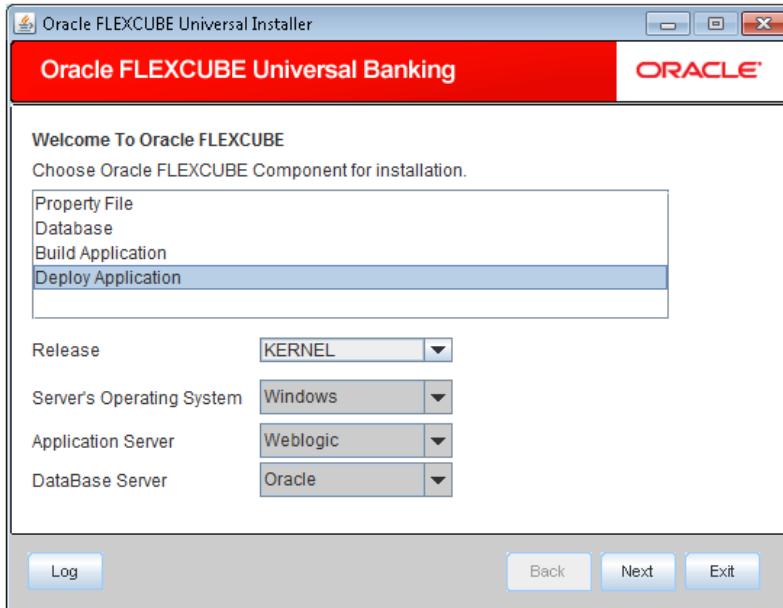
#### 2.1.1 Partially Deploying FGL Application

1. Launch Oracle FLEXCUBE Universal Banking Solution Installer.
2. Click 'Next' and the following screen is displayed:



Select 'General Ledger'.

3. Click 'Next', and following screen is displayed:.



4. Select “Deploy Application”. Specify the following details:

#### **Release**

Select the release in which you are installing the FGL application. Select the appropriate one from the adjoining drop-down list.

#### **Server’s Operating System**

Select the server’s operating system in which you are installing the FGL application. Select the appropriate one from the adjoining drop-down list.

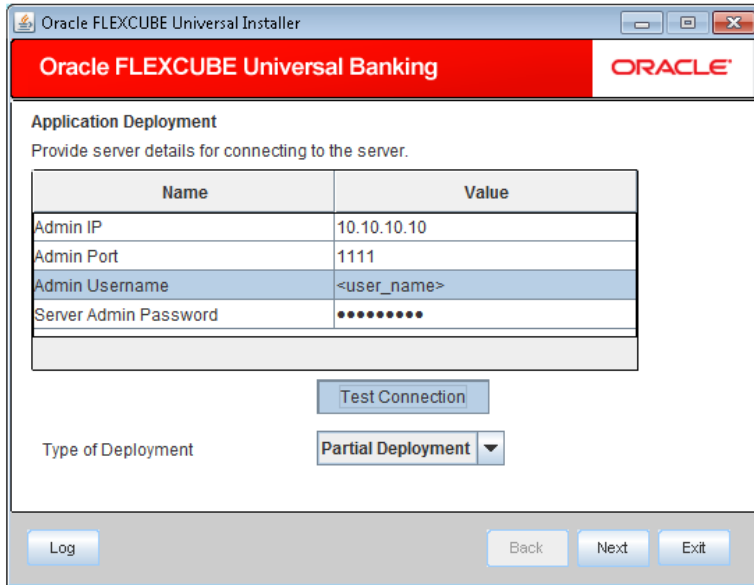
#### **Application Server**

Select ‘Weblogic’ from the adjoining drop down list.

#### **Database Server**

Select the database server in which you are installing the FGL application. Select the appropriate one from the drop-down list.

5. Click on ‘Next’ to display the screen below.



6. Specify the following details:.

**Admin Password**

Specify the appropriate admin IP of the weblogic application server.

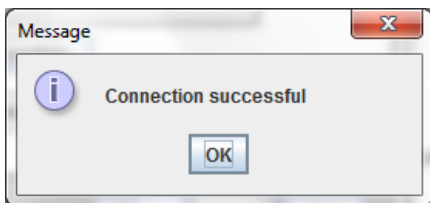
**Admin Password**

Please provide the appropriate admin password of the weblogic application server.

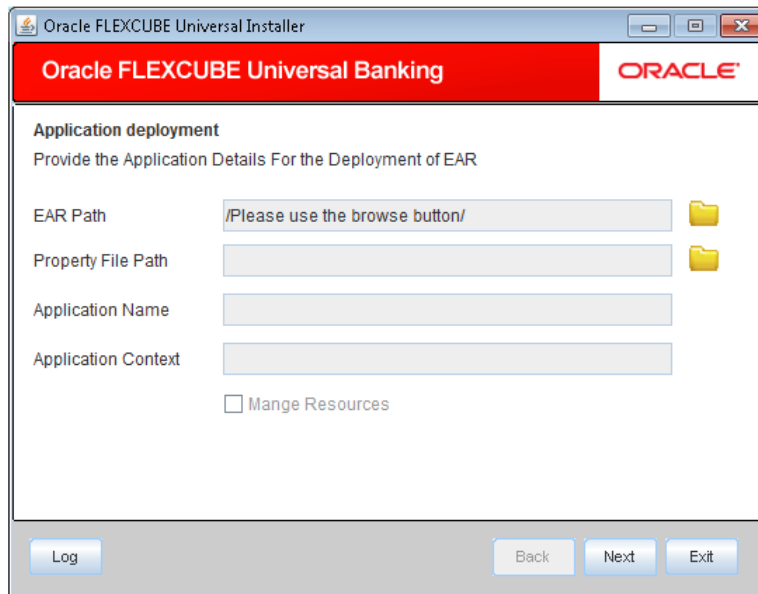
**Type of Deployment**

Select 'Partial Deployment'.

7. Click 'Test Connection' to test the connection with the application server. On successful connection, the following message is displayed:



8. Click 'OK' and the following screen is



9. Specify the following details:

#### **EAR PATH**

Specify the path of the EAR which is to be deployed.

#### **Property File Path**

If the property file is internal to the application EAR, it gets displayed here on selection of EAR path. If the property file is external, specify the location. You can use the directory button to browser and select the directory.

#### **Application Name**

Application name gets displayed on selection of EAR path.

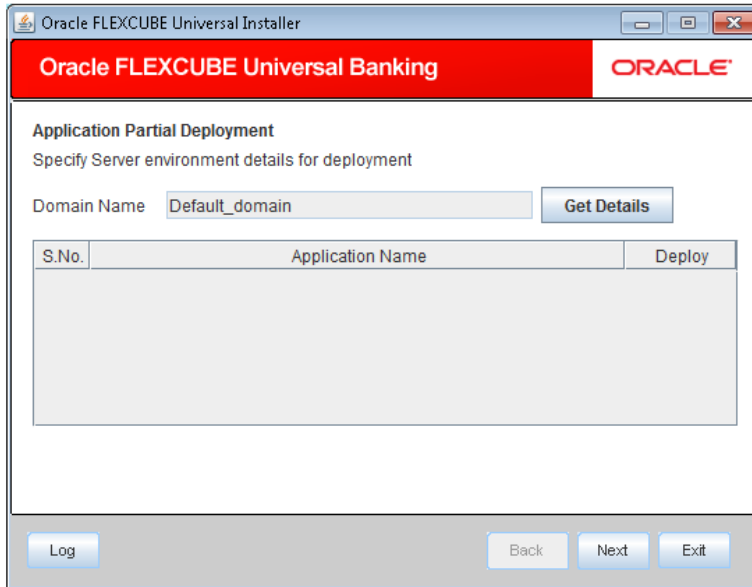
#### **Application Context**

Application context gets displayed on selection of EAR path

#### **Manage Resources**

Check this box if resources are to be created along with deployment.

10. Click 'Next' to display the screen below:



11. Specify the following details:

Click 'Get Details' to list all the applications deployed on weblogic application server.

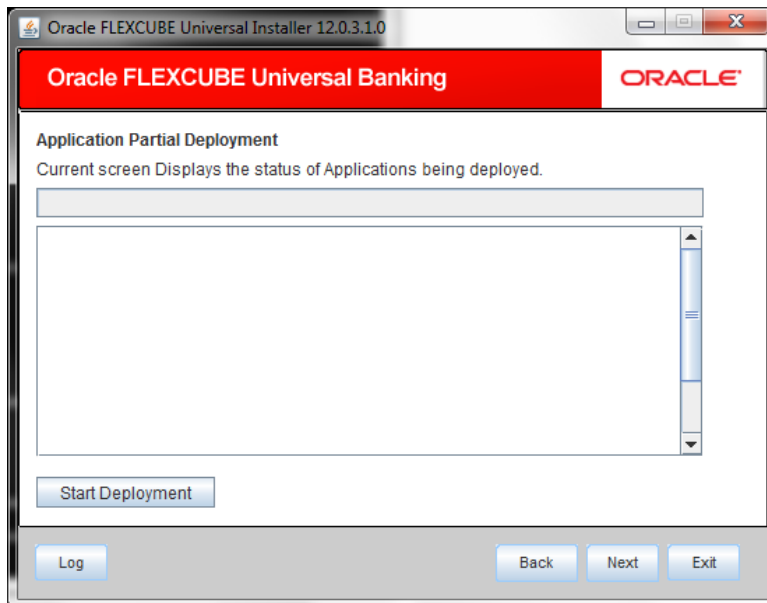
**Application Name**

Select the application to be patched.



If no application is available then partial deployment cannot be proceeded further.

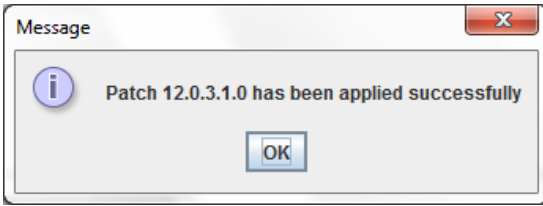
12. Click 'Next' and the following screen is displayed:



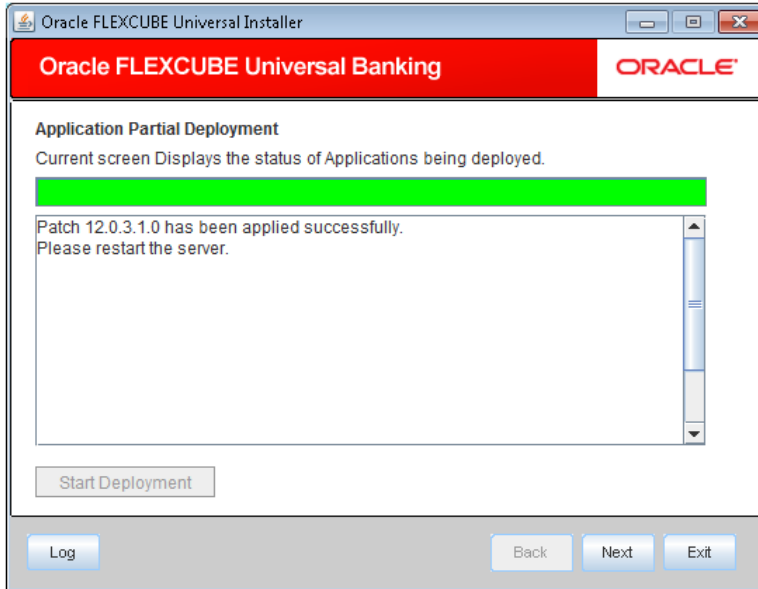
13. Click 'Start Deployment' to start the partial/patch deployment.

14. On successful partial deployment, the following message is displayed:





15. Click 'OK' and the following screen is displayed:



16. Restart the server for changes pertaining to the deployed patch to reflect.



**FLEXCUBE General Ledger Application Deployment in Weblogic  
[October] [2015]  
Version 12.1.0.0.0**

**Oracle Financial Services Software Limited  
Oracle Park  
Off Western Express Highway  
Goregaon (East)  
Mumbai, Maharashtra 400 063  
India**

**Worldwide Inquiries:  
Phone: +91 22 6718 3000  
Fax: +91 22 6718 3001  
[www.oracle.com/financialservices/](http://www.oracle.com/financialservices/)**

**Copyright © [2007], [2015], Oracle and/or its affiliates. All rights reserved.**

**Oracle and Java are registered trademarks of Oracle and/or its affiliates. Other names may be trademarks of their respective owners.**

**U.S. GOVERNMENT END USERS: Oracle programs, including any operating system, integrated software, any programs installed on the hardware, and/or documentation, delivered to U.S. Government end users are "commercial computer software" pursuant to the applicable Federal Acquisition Regulation and agency-specific supplemental regulations. As such, use, duplication, disclosure, modification, and adaptation of the programs, including any operating system, integrated software, any programs installed on the hardware, and/or documentation, shall be subject to license terms and license restrictions applicable to the programs. No other rights are granted to the U.S. Government.**

**This software or hardware is developed for general use in a variety of information management applications. It is not developed or intended for use in any inherently dangerous applications, including applications that may create a risk of personal injury. If you use this software or hardware in dangerous applications, then you shall be responsible to take all appropriate failsafe, backup, redundancy, and other measures to ensure its safe use. Oracle Corporation and its affiliates disclaim any liability for any damages caused by use of this software or hardware in dangerous applications.**

**This software and related documentation are provided under a license agreement containing restrictions on use and disclosure and are protected by intellectual property laws. Except as expressly permitted in your license agreement or allowed by law, you may not use, copy, reproduce, translate, broadcast, modify, license, transmit, distribute, exhibit, perform, publish or display any part, in any form, or by any means. Reverse engineering, disassembly, or decompilation of this software, unless required by law for interoperability, is prohibited.**

**The information contained herein is subject to change without notice and is not warranted to be error-free. If you find any errors, please report them to us in writing.**

**This software or hardware and documentation may provide access to or information on content, products and services from third parties. Oracle Corporation and its affiliates are not responsible for and expressly disclaim all warranties of any kind with respect to third-party content, products, and services. Oracle Corporation and its affiliates will not be responsible for any loss, costs, or damages incurred due to your access to or use of third-party content, products, or services.**